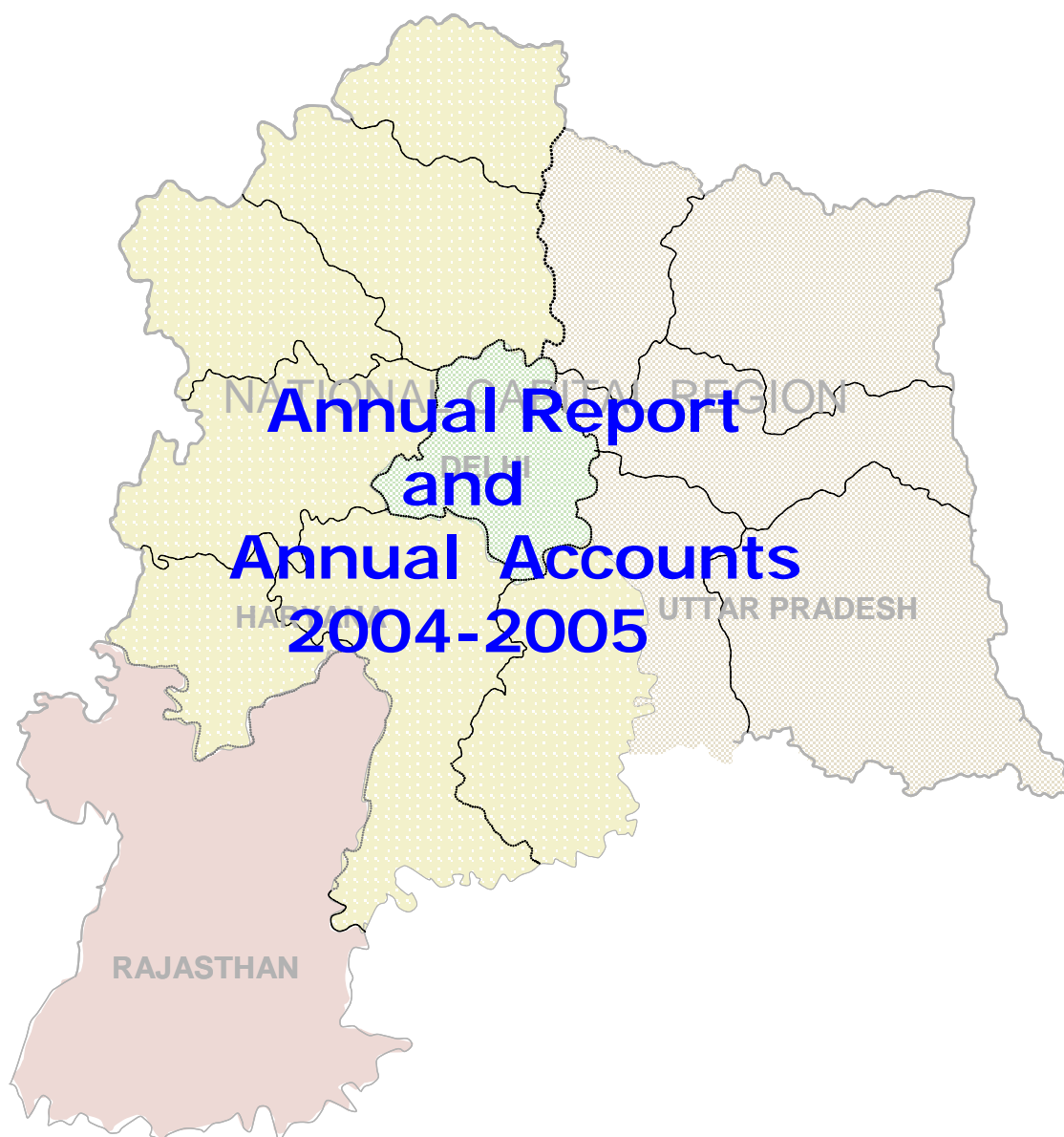




NATIONAL CAPITAL REGION PLANNING BOARD



Ministry of Urban Development
Core 4-B, First Floor, India Habitat Centre, Lodhi Road, New Delhi

<http://ncrpb.nic.in>

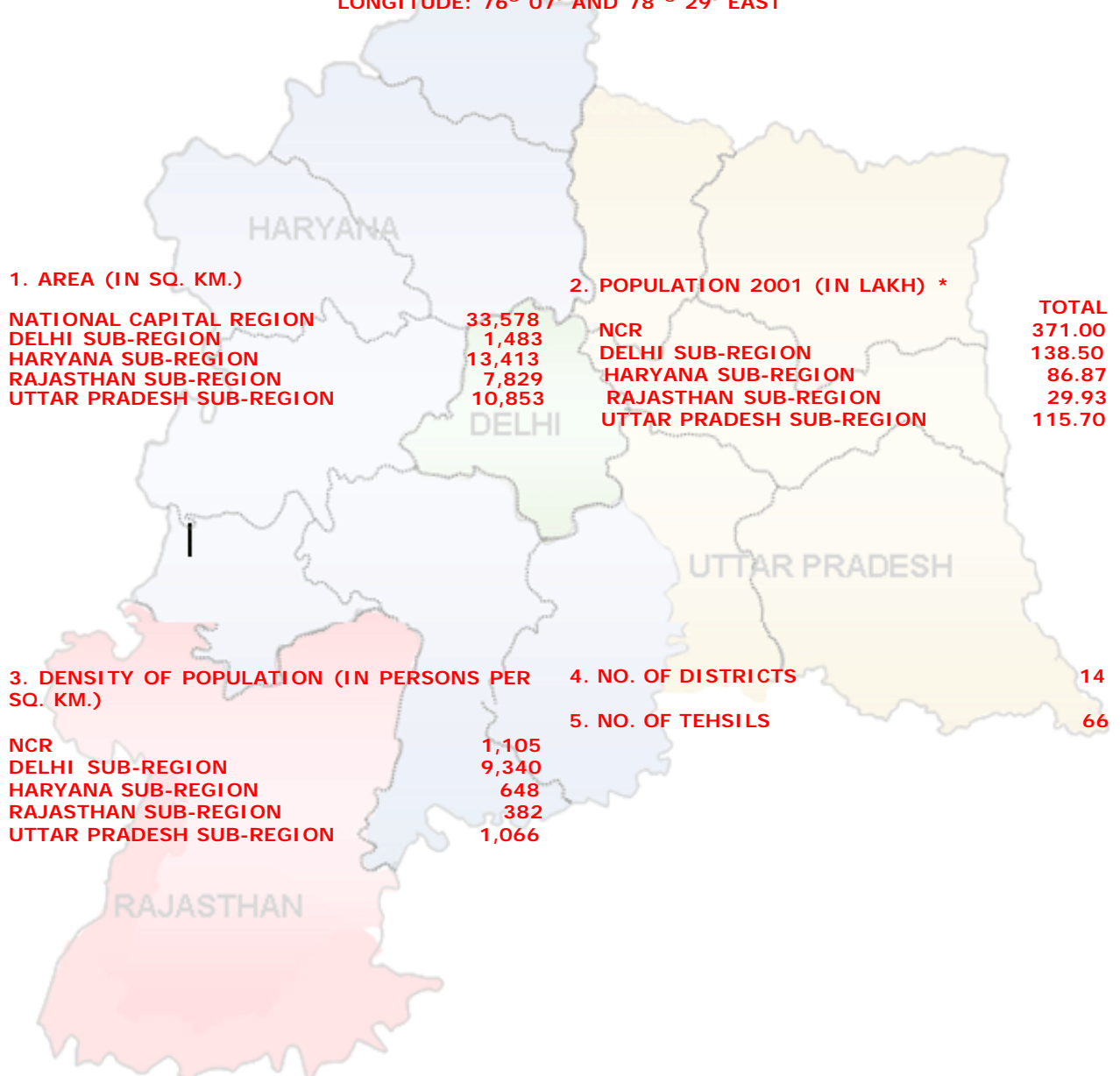
ANNUAL REPORT & ANNUAL ACCOUNTS
2004-2005



ANNUAL REPORT & ANNUAL ACCOUNTS
2004-2005

NCR AT A GLANCE

LATITUDE: 27° 03' AND 29 ° 29' NORTH
LONGITUDE: 76° 07' AND 78 ° 29' EAST



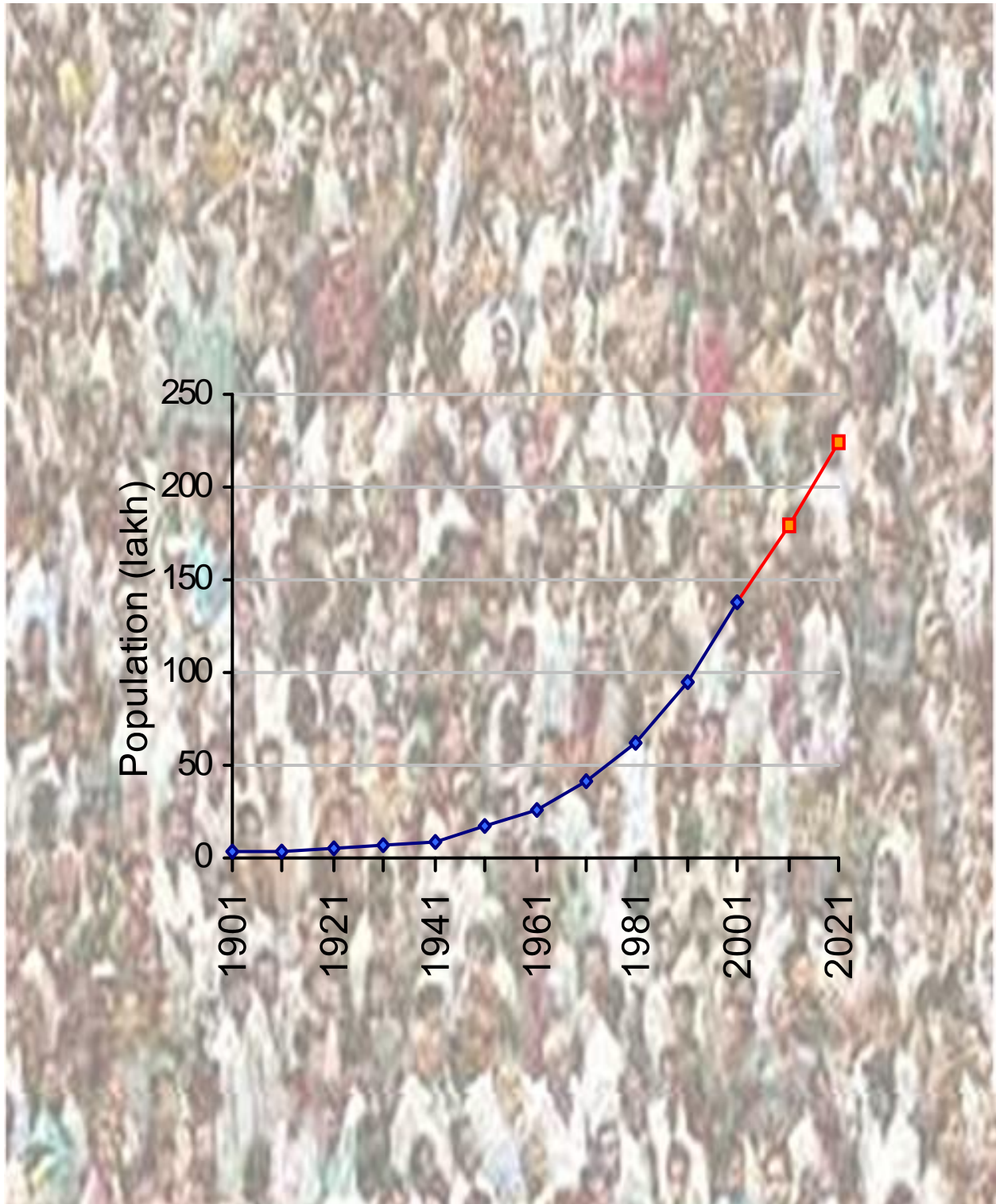
1



CONTENTS

CONTENTS	PAGE NO.
ABOUT THE BOARD	4
THE YEAR IN RETROSPECT	7
AUDITOR'S REPORT	18
ANNUAL ACCOUNTS	25

Growth of Population in NCT-Delhi



3



1.1 OBJECTIVES

The National Capital Region Planning Board was constituted under the National Capital Region Planning Board Act, 1985.

It has the mandate for preparing the Plan for the development of the National Capital Region and for coordinating and monitoring the implementation of such Plan and for evolving harmonized policies for the control of land-uses and development of infrastructure in the National Capital Region so as to avoid any haphazard development of the region.

1.2 AREA OF THE NATIONAL CAPITAL REGION

The National Capital Region comprises an area of 33,578 sq. kms., covering the NCT- Delhi and parts of the states of Haryana, Rajasthan and Uttar Pradesh.

(i) NCT- Delhi (1,483 sq. km.)



ii) Haryana (13,413 sq. km.)



4

a) Gurgaon District comprising of the tehsils of Gurgaon, Pataudi and Sohna;

b) Faridabad District comprising of the tehsils of Ballabgarh, Faridabad, Palwal and Hodal;

c) Rohtak District comprising of the tehsils of Rohtak and Maham;

d) Sonapat District comprising of the tehsils of Sonapat, Gohana, Gannaur and Kharkhoda;

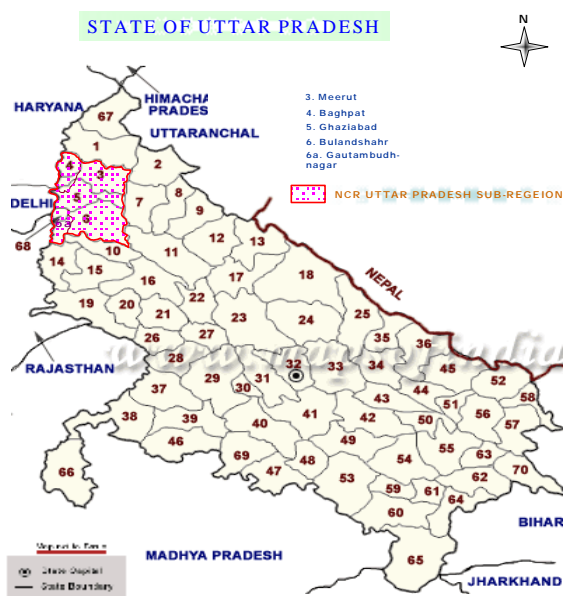
e) Panipat District comprising of the tehsils of Panipat, Samalkha and Israna.

- f) Jhajjar District comprising of the tehsils of Jhajjar, Bahadurgarh and Berikhas.
- g) Rewari District comprising of the tehsils of Rewari, Bawal and Kosli;
- h) Mewat District comprising of the tehsils of Hattin, Taoru, Nuh, Ferozpur-Jhirka and Punahana
- c) Ghaziabad District comprising of the tehsils Ghaziabad, Hapur, Garhmukteshwar and Modinagar
- d) Gautam Budh Nagar comprising of the tehsils of Sadar, Dankaur, Dadri and Jewar;
- e) Baghpat District comprising of the tehsils of Baghpat, Baraut, and Khekra.

(iii) Uttar Pradesh (10,853 sq. kms)

iv) Rajasthan (7,829 sq. kms.)

5



a) Bulandshahr District comprising of the Tehsils of Anupshahr, Bulandshahr and Khurja, Siyana, Sikandrabad, Shikarpur, Debai and Pahasu.

b) Meerut District comprising of the Tehsils of Meerut, Mawana and Sardhana;

Alwar District comprising of the tehsils of Alwar, Behror Mandawar, Kishangarh Bas, Tijara, Kot Kasim, Ramgarh, Bansur, Thanagazi, Rajgarh, Lachmangarh and Kathumar.



NCRPB

1.3 Constitution

In exercise of the powers conferred under Section 3 of the NCRPB Act, the Central Government constituted the National Capital Region Planning Board. The Board is chaired by the Union Minister for Urban Development. It consists of 21 members and 10 Co-opted members.

1.	Union Minister for Urban Development	Chairman
2.	Minister for Power, Government of India	Member
3.	Minister for Communications & IT, Government of India	Member
4.	Minister for Railways, Government of India	Member
5.	Minister for Roads & Highways, Government of India	Member
6.	Chief Minister, Haryana	Member
7.	Chief Minister of NCT- Delhi	Member
8.	Chief Minister, Rajasthan	Member
9.	Chief Minister, Uttar Pradesh	Member
10.	Minister of State for Urban Employment and Poverty Alleviation	Member
11.	Lieutenant Governor, National Capital Territory - Delhi	Member
12.	Minister of Town & Country Planning, Government of Haryana	Member
13.	Minister of Urban Development, Government of Rajasthan	Member
14.	Minister, Urban Development, Government of Uttar Pradesh	Member
15.	Secretary, Ministry of Urban Development, Government of India	Member
16.	Chief Secretary, Government of Haryana	Member
17.	Chief Secretary, Government of Rajasthan	Member
18.	Chief Secretary, Government of National Capital Territory - Delhi	Member
19.	Secretary, Housing & Urban Development, Government of U.P.	Member
20.	Chief Planner, Town & Country Planning Organisation, Govt. of India	Member
21.	Member Secretary, National Capital Region Planning Board	Member Secretary

1	Chief Minister, Madhya Pradesh	Co-opted
2	Secretary, Ministry of Commerce & Industry, Department of Industrial Policy & Promotion, Government of India	Co-opted
3	Secretary, Department of Expenditure, Min. of Finance, Government of India	Co-opted
4	Secretary, Department of Power, Government of India	Co-opted
5	Secretary, Min. of Roads & Highways, Government of India	Co-opted
6	Chairman, Railway Board, Government of India	Co-opted
7	Secretary, Department of Urban Development & Housing, Govt. of Punjab	Co-opted
8	Secretary, Department of Urban Development & Housing, Govt. of Madhya Pradesh	Co-opted
9	Principal Advisor (HUD), Planning Commission, Government of India	Co-opted
10	Vice Chairman, Delhi Development Authority	Co-opted

1.4 Functions

(Section-7 NCRPB Act, 1985)

to prepare the Regional Plan and the Functional Plans;

to arrange for the preparation of Sub-regional Plans and Project Plans by the participating States;

to coordinate the enforcement and implementation of the Regional Plan, Functional Plans, Sub-regional Plans and Project Plans through the participating States;

to ensure proper and systematic programming phasing by the participating States in regard to project formulation, determination of priorities in the National Capital Region or Sub-Regions and phasing of development of the National Capital Region in accordance with stages indicated in the Regional Plan;

to arrange for, and oversee, the financing of selected development projects in the National Capital Region through Central and State Plan funds and other sources of revenue

2. THE YEAR IN RETROSPECT 2.2 Regional Plan 2021

2.1. Board Meeting

27th meeting the Board was held on 28th October, 2004.



The important decisions in the Board meeting :

NCR Planning Board prepared draft Regional Plan with the prospective year 2021. The Board in its 27th meeting held on 28th October, 2004, decided to invite objections/ suggestions under Section 12 of the NCRPB, Act, 1985. The draft Regional Plan was published on 27th December, 2004 for inviting objections/ suggestions from the public, Central and State Governments and local bodies. Subsequently the draft plan was approved by the Board on 9.7.2005.

7

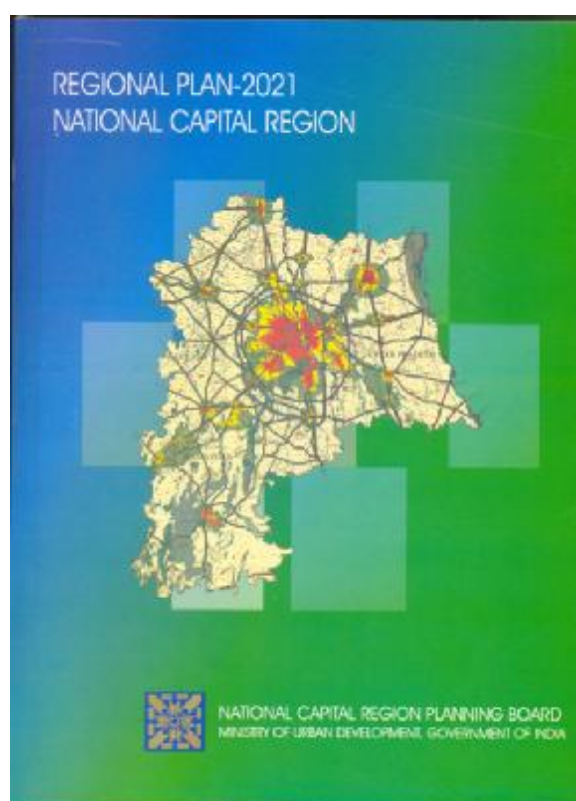
nDraft Regional Plan 2021 was considered and decision taken to invite objections / suggestions.

nmore pro-active role for the NCR Planning Board.

nInitiate studies on important aspects of urban development viz. water, power and transport etc.

nInitiate studies for development of new townships.

nPromote development of city forests in the NCR.



(Rs. 225)

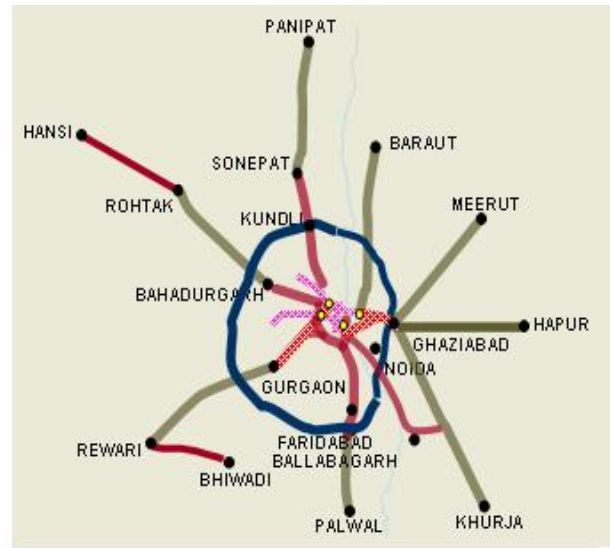


Salient Features of the Regional Plan-2021

It aims to promote growth and balanced development of the entire National Capital Region through creating economic base in the identified major urban settlements such as metro centres and regional centers for utilizing the economic development impulses of Delhi through efficient transport network, development of physical infrastructure, rational land use pattern and improved environment and quality of life.



Better and integrated connectivity and accessibility in the region through development by Peripheral Expressway, Regional Rapid Transit System (RRTS), Integrated Rail-cum-Bus Transit System (IRBT) connecting various parts of the region.

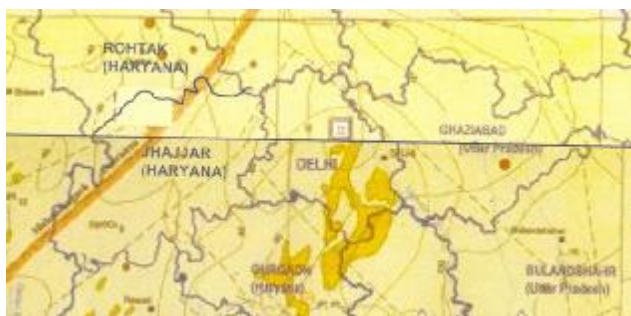


unrestricted movement of buses, taxis and auto-rickshaws in the NCR.

Integrated regional water supply scheme to be prepared based on a study. More focus has also been on the power sector.

Heritage and tourism sites to be identified and protected.

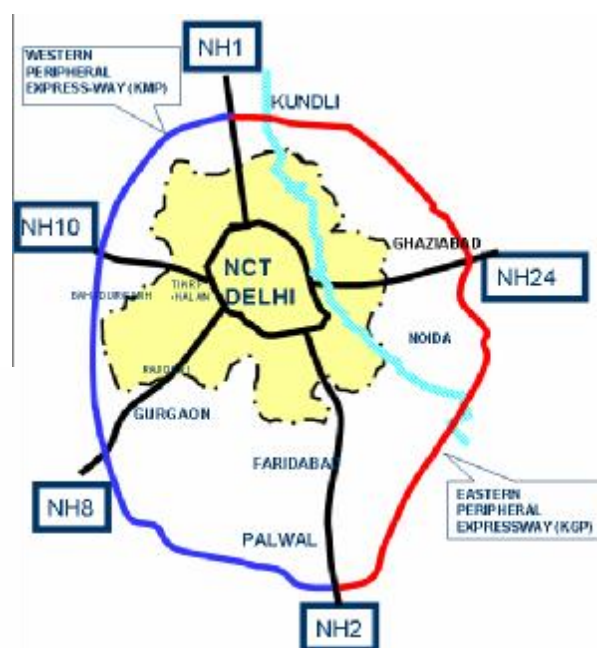
More emphasis on disaster management focusing on prevention, mitigation and preparedness as compared to a relief oriented approach



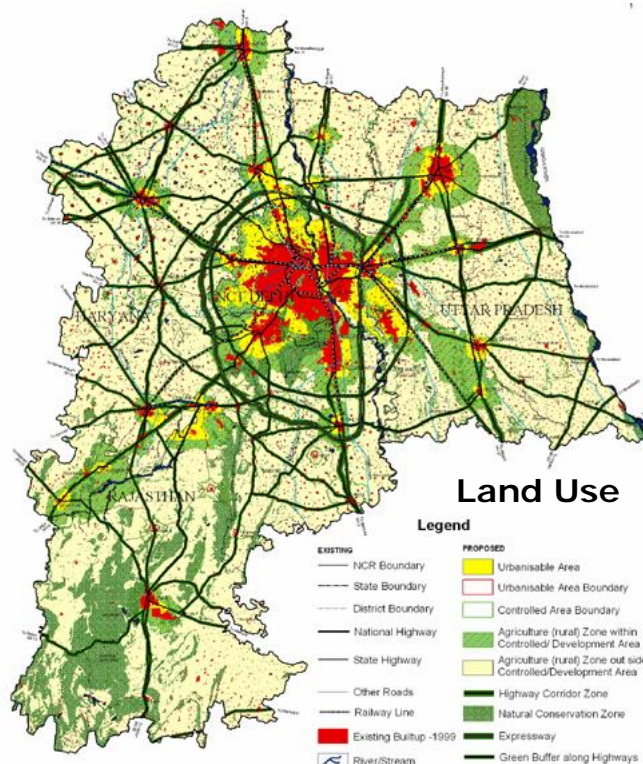
2.3 Peripheral Expressways:

The Western & Eastern Peripheral Expressways were proposed connecting National Highways No. 1, 2, 8, 10 and 24 to carry the by-passable traffic which was adding to congestion and pollution to the roads of NCT Delhi.

Highway Corridor Zone has been proposed with the minimum width of 500 metres on either side of ROW of National Highways.



9



Minimise the adverse impact that may occur on the environment in the process of development

With the initiative of the NCR Planning Board and the intervention of Cabinet Secretary and Supreme Court, the projects are being implemented. The Western Peripheral Expressway is being implemented by the Government of Haryana and the Eastern side by the National Highway Authority of India (NHAI)

Ministry of Shipping, Road Transport and Highways is the nodal Ministry for the implementation of the projects



2.4 Integrated Rail-cum-Bus Transit System (I.R.B.T.)

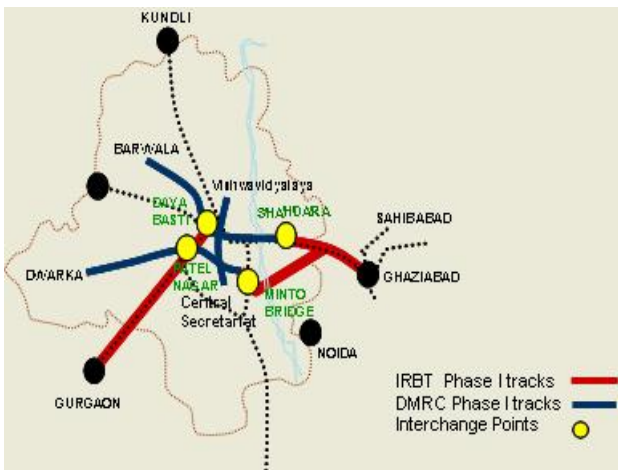
Integrated Rail-cum-Bus Transit System was proposed with an estimated cost of Rs.2239 crores

The following three corridors have been taken in the first phase of IRBT.

(A) Shahdara-Ghaziabad
(14.93 kms.)

(B) Sahibabad-Minto Bridge
(17.36 kms.)

(C) Dayabasti-Gurgaon
(30.53 kms.)



Proposal

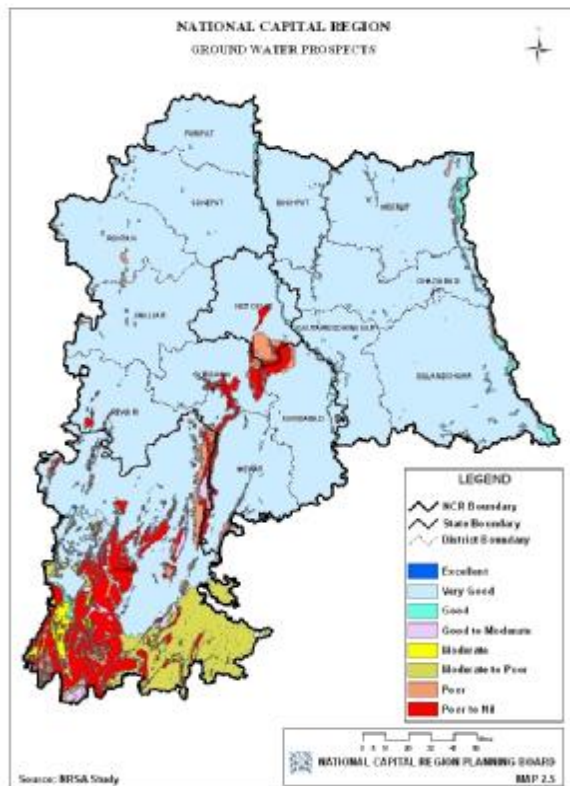
This is under consideration with the Planning Commission.

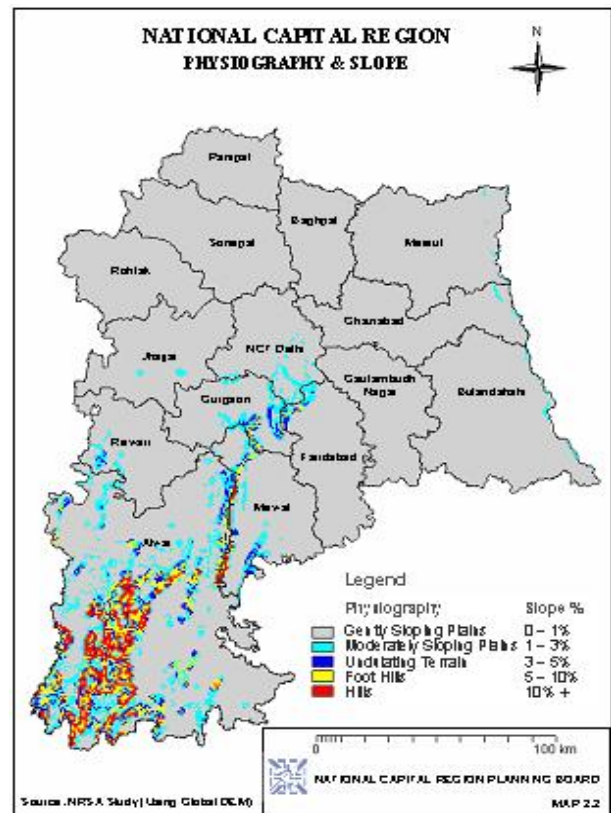
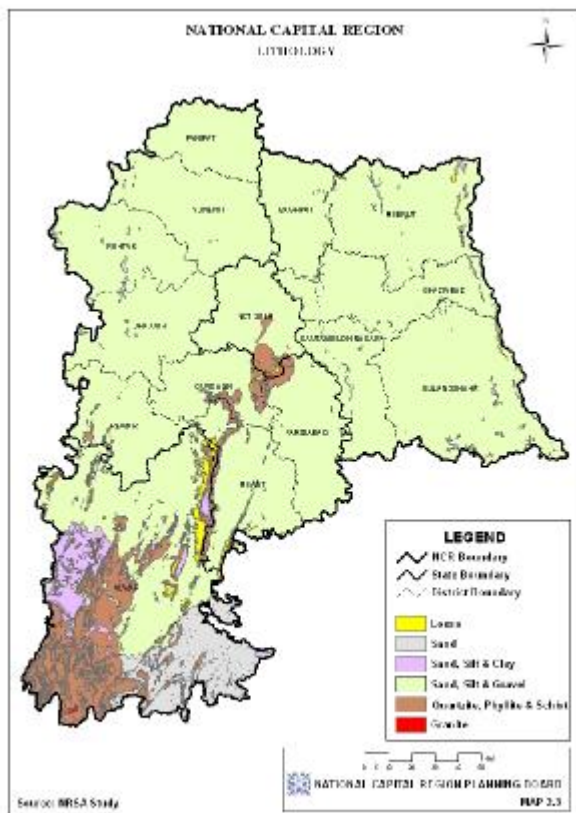
2.5 Application of Remote Sensing & GIS Technology

The Board awarded studies to National Remote Sensing Agency (NRSA):

n Creation and development of Remote sensing and GIS data base for 3,336 Sq.kms of additional area covering the remaining part of Alwar District, Rajasthan Sub-region of NCR.

n Incorporation of the proposals of the Regional Plan 2021 in GIS data Base of the National Capital Region.





11

nA study on “Development of digital database on Hydro-geomorphology, Geology and groundwater for NCR”. Satellite data was interpreted on 1:50000 scale to prepare thematic layers. The study has been successfully completed and the maps such as drainage, Hydro-geo-morphological ground water prospects, Ground water table (pre & post monsoon) and Ground water quality were generated and used in preparation Regional Plan 2021.



2.6 Projects financed by NCRPB

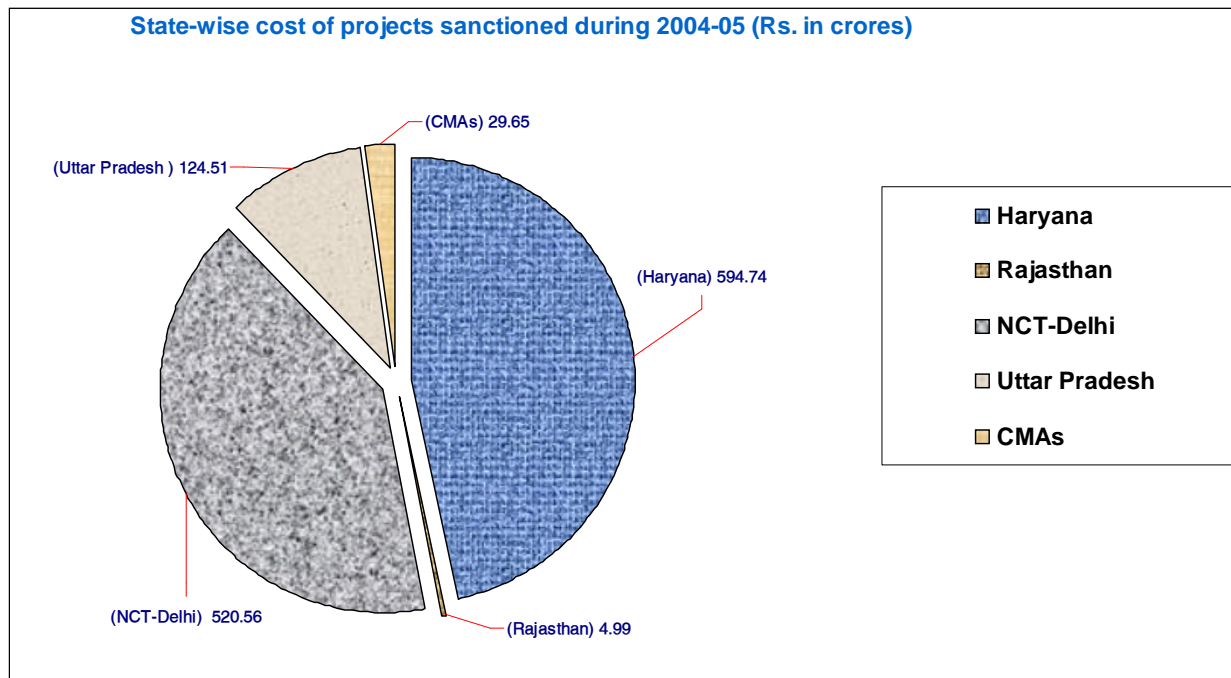
The National Capital Region Planning Board provides financial assistance to the participating States and their implementing agencies in the form of loan up to 75% of the estimated cost of the project.

As on 31st March , 2005 the Board had financed 200 projects with an estimated cost of Rs.8047.65 Crores. A loan of Rs.4253.72 Crores was sanctioned for these projects, of which Rs. 1983.80 crores were released to the participating States and implementing agencies. An expenditure of Rs.3311.01 crores were reported by the Governments of the participating States and their respective implementing agencies upto 31st March, 2005.

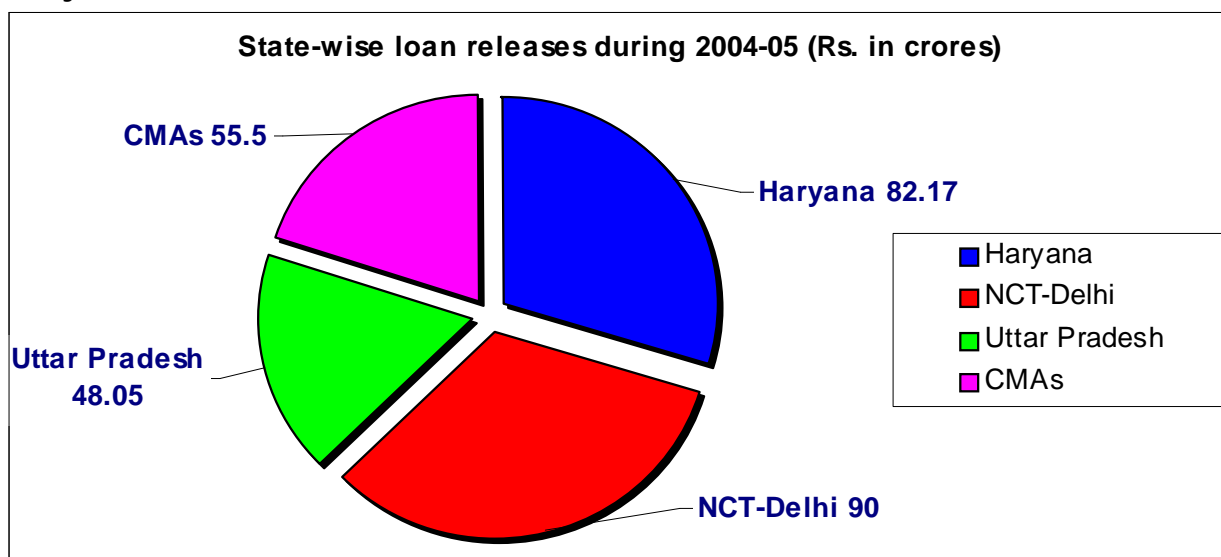
12

SUB-REGION	NUMBER OF PROJECTS	ESTIMATED COSTS	LOAN SANCTIONED	LOAN RELEASED BY GOI PRIOR TO INCEPTION OF BOARD	LOAN RELEASED BY THE BOARD	EXPENDITRE (UPTO 31.3.2005)	CONTRIBUTION BY STATE GOVTS. AND IMPLEMENTING AGENCIES AT PROJECT LEVEL
UTTAR - PRADESH	67	2159.93	1132.87	5.62	626.46	1105.22	473.12
RAJASTHAN	46	385.48	158.75	3.37	140.48	215.22	71.37
HARYANA	73	4205.92	2380.58	4.69	925.66	1619.63	689.28
CMAS	12	775.76	271.52	0.00	201.18	330.83	129.65
NCT-DELHI	2	520.56	310.00	0.00	90.00	40.11	0
TOTAL	200	8047.65	4253.72	13.68	1983.80	3311.01	1363.42

Out of 200 projects financed by the Board, 129 projects were completed as on 31st March , 2005 .



2.7. During the year 2004-05 two meetings of Project Sanctioning and Monitoring Group-I (PSMG-I) were held on 18th June, 2004 and on 20th November, 2004 Total nineteen projects were sanctioned with the estimated cost of Rs. 1274.45 crores with loan component of Rs. 823.56 crores. Out of which Eight projects were exclusively for rural water supply in the sub-region of Haryana, including the water scarce areas of Mewat. These projects cover almost 50 of the villages in Haryana Sub-region and are being implemented by public Works Department (Public Health), Haryana.



The Board achieved 100% recovery of Loan from State Governments/Implementing Agencies



Glimpses of some of the projects financed by the Board



Road over-bridge Alwar



Jindoli Bypass Tunnel Alwar



Residential Scheme Bhiwadi



Bhiwadi Dharuhera Road



Khuskhera Industrial area Bhiwadi



Industrial Area at Loni



133 KV Sub-Station Gwalior

2.8 New initiatives

A scheme was announced to promote development of city forests within the Region. The Board approved financial assistance upto Rs. 50,000 per hectare to meet the cost of the saplings, their Plantation and maintenance for a period of 3 years as reimbursement of expenditure to the state Governments and their implementing agencies on successful implementation of each stage.



In order to improve the efficiency, in implementation of projects performance linked incentive scheme was approved.

Incentive of 0.10% in the form of reduction in interest rates for regular and timely drawal of loan instalment by State Government / Implementing Agencies as per loan schedule/agreement.

0.15% incentive on total loan amount in the form of reduction in interest rate, on timely completion of project as per time schedule.

0.25% incentive in the form of reduction in interest rate, for timely payment of principal & interest amount strictly as per payment schedule.

2.9 Reduction of interest rate

The Board provides financial assistance to the State Governments and their implementing agencies at the most economical cost in order to promote development of infrastructure in the Region.

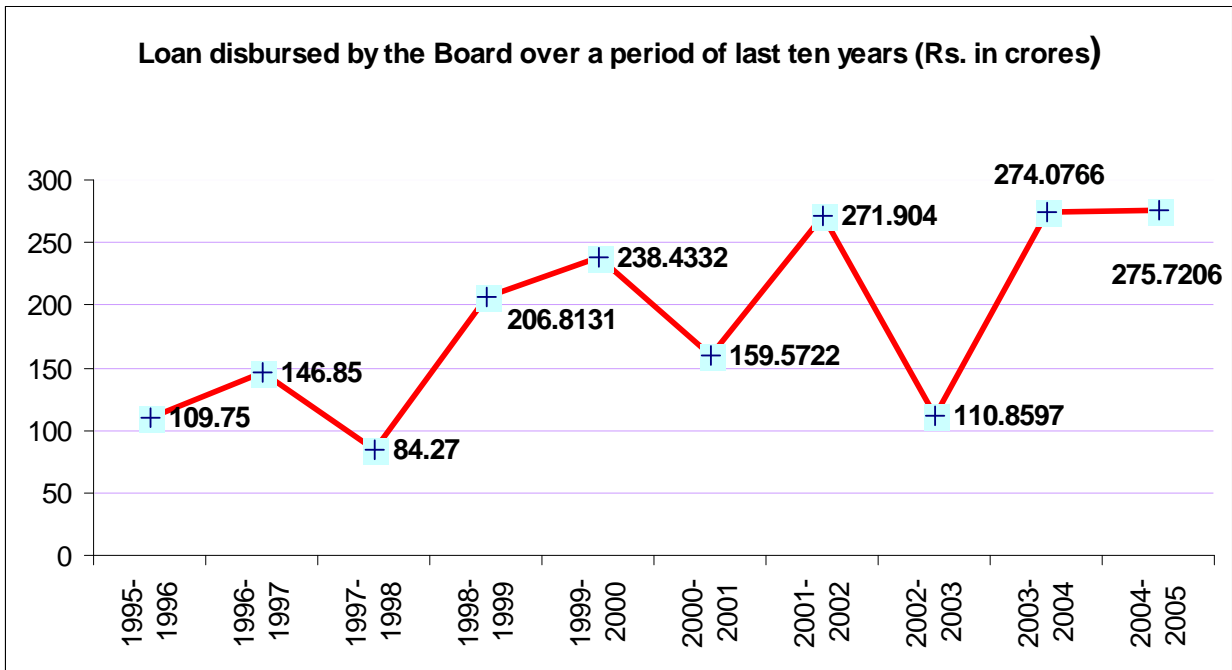
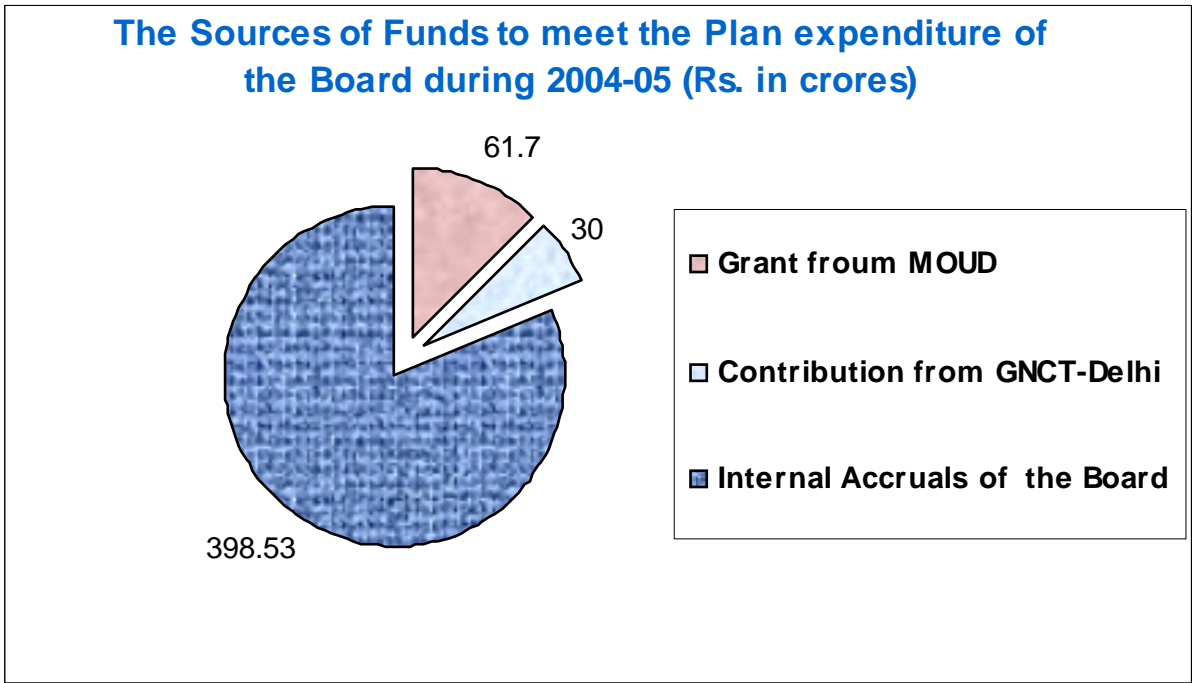
Keeping in view its cost of funds and the market trend. The Board decided to reduce its rates of interest applicable on loan, W.e.f.5.8.2004.

The revised rates of interest were applicable on all new releases of loan installments both for ongoing as well as the new projects.

Resetting of interest Rates was permitted for the first time against the outstanding loan.

2.10 Resources

Ministry of Urban Development released plan grant for Rs.61.70 Cr. The Grants received from the, GNCT-Delhi and the internal accruals of the Board were utilized for the purpose as laid down NCRPB Act. The Board incurred the expenditure of Rs. 490.23 Crores under the Plan head. The details are given in the Annual Accounts enclosed.



During the year 2004-05, the Board disbursed loan of Rs.275.72 crores, which is the highest release by the Board in a Financial Year.

2.11 With the financial assistance from the Board, development of both physical and social infrastructure have been reported by the state Govts. and their implementing agencies, which include development of more than 1.25 lakh Residential/ Commercial/Industrial plots including the following types of infrastructure:-

SECTORS	NUMBER OF PROJECTS
TRANSPORTATION PROJECT (ROAD WIDENING/STRENGTHING/TUNNELS/BRIDGES ETC.)	24
WATER SUPPLY (INCLUDING SOURCE DEVELOPMENT, TREATMENT, STORAGE AND DISTRIBUTION)	20
DRAINAGE AND SEWERAGE (INCLUDING COLLECTION AND DISPOSAL)/SOLID WASTE MANAGEMENT	10
POWER (HT TRANSMISSION, LT TRANSMISSION AND DISTRIBUTION ONLY)	9
LAND DEVELOPMENT INCLUDING COMMON FACILITIES LIKE HOSPITALS, RECREATION FACILITY, ABATTOIR, ETC.)	137
TOTAL	200

17





3. Annual Accounts 2004-05

Audit Report on the accounts of National Capital Region Planning Board (NCRPB), New Delhi for the year 2004-05

1. Introduction

National Capital Region Planning Board (NCRPB) was established in March 1985 under the Act of Parliament called "National Capital Region Planning Board Act, 1985". The Ministry of Urban Development and Poverty Alleviation release grants to the Board to enable the Board to carry out its functions.

During the year 2004-05, the Board received a total grant of Rs. 63.60 crore from the Ministry as per details given below:-

i) Revenue (Non-plan)	Rs. 1.90 crore
ii) Capital (Plan)	Rs. 61.70 crore

The annual accounts of NCRPB are audited under Section 19(2) of the Comptroller and Auditor General's (Duties, Powers and Conditions of Service) Act 1971 read with Section 25 of the NCRPB Act 1985.

18

2. Comments on Accounts

Balance Sheet

Liabilities

2.1 GIS Fund – Rs. 16.18 lakh

This balance of Group Insurance Saving Fund includes a provision of Rs. 13 lakh (Rs. 8 lakh for 2003-04 and Rs. 5 lakh for 2004-05) against which the Board has not framed any detailed scheme defining the basis of its contribution. Further, the Fund is not represented by corresponding investment. The fact that the scheme is under finalisation and provisions are being made on estimated basis have not been disclosed in notes to accounts.

2.2 Revision of Accounts

On the basis of draft audit comments, the accounts of the Board were revised. The impact of revision of accounts was as under:-

	Amount (Rs. In lakh)
(i) Income from interest on loan and on bank deposits stands reduced	2.07
(ii) Provision for depreciations stands reduced by	1.81
(iii) Current Assets (Fixed Deposit with banks) stands reduced	1.70

19



Pr. Director of Audit
Economic & Service Ministries

Place: New Delhi

Date:

30 मार्च 2006



**OFFICE OF THE PRINCIPAL DIRECTOR OF AUDIT,
ECONOMIC & SERVICE MINISTRIES,
NEW DELHI**

AUDIT CERTIFICATE

I have examined the Receipts and Payments Account and Income and Expenditure Account for the year ended 31 March 2005 and the Balance Sheet as on 31 March 2005 of National Capital Region Planning Board, New Delhi. I have obtained all the information and explanations that I have required and subject to the observations in the appended Audit Report, I certify, as a result of the audit conducted by my office that in my opinion these accounts and Balance Sheet are properly drawn up so as to exhibit a true and fair view of the state of affairs of the National Capital Region Planning Board, New Delhi, according to the best of information and explanations given to me and as shown by the books of the organization.

20


(SHUBHA KUMAR)
Pr. Director of Audit
Economic & Service Ministries

Place: New Delhi

Date: 30 MAR 2006

NATIONAL CAPITAL REGION PLANNING BOARD

NOTES ON ACCOUNTS AND SIGNIFICANT ACCOUNTING POLICIES ANNEXED TO AND FORMING PART OF BALANCE SHEET AS ON 31st MARCH, 2005.

1 Basis of Accounting :

The Accounts of the Board are prepared at historical cost under the accrual method, unless otherwise stated.

2 Income Recognition :

All income has been recognized on accrual basis.

3 Fixed Assets :

(a) Fixed Assets are stated at depreciated value. The depreciation is provided on fixed assets as per rates prescribed under the Income Tax Act on written down method.

(b) Assets Fund has been created for assets acquired out of the Government grants and the same has been shown as contra item in the Balance Sheet.

(c) Depreciation of Rs.2823153.22 on Assets acquired out of Government Grants have been charged from Assets funds and depreciation of Rs.145636.55 on Assets acquired out of own funds have been charged to Income & expenditure (Plan).

21

4 Recognition of Expenditure :-

All expenses are recognized on accrual basis except payment of LTC, which are taken on cash basis.

5 Retirement Benefits:-

(a) Gratuity :-

No provision is made for gratuity payable to the staff and will be provided in the year of payment.

sd/-
Asst. Accounts Officer

sd/-
Director (A&F)

sd/-
Member
Secretary



NCRPB

(a) Provident Fund:-

The Board is maintaining General Provident Fund Account and Contributory Provident Fund Account which has been recognized by the Department of Pension and Pensioners Welfare. The liability towards GPF & CPF has been charged to revenue in the relevant year and transferred to the provident Fund Account of the Board.

(b) Leave Encashment :-

Liability for entitlement in respect of leave encashment is accounted for on cash basis.

(c) Pension Fund :

No provision is made for pension payable to serving staff of the Board. However Pension paid to the retired employees of the Board during the year is charged to Income & Expenditure Account (Non-Plan). The Board has received pension fund of Rs.5,04,101/- in respect of one employees transferred from other department on permanent absorption and this is still shown as liability under the heading "Pension Fund" in liability side of the Balance Sheet.

(d) Provision for contribution of Board towards GIS liability:-

Amount recovered from the salary of employees towards GIS recovery was taken into GIS Fund till F.Y. 2002-03. But there was no contribution by the Board. As the Board had not yet taken any policy under Group Insurance Scheme (upto 31.3.2005) and in order to meet any such liability as and when it will accrue a provision of Rs. 5.00 lac towards liability for Group Insurance payable on death/retirement of employee, has been provided for in the F.Y 2004-05 and the same has been taken into GIS Fund by charging from Income & Expenditure (Non-Plan).

22

6 NCR Books and Publications:-

The cost of NCR Books and Publications sold and distributed free as complimentary copies are charged to Income and Expenditure Account (Plan) and the stock of unsold books at the close of the Financial Year are valued at cost and shown in the Balance Sheet. Further, cost of NCR Planning Books & Publication sold/complimentary of Rs.1945161.44 shown in Income and Expenditure (Plan) includes Rs.1897990.60 being cost of NCR Books & Publication issued complimentary and Rs. 47170.84 being cost of NCR Books & Publication sold.

7 Plan & Non-Plan Transactions :

Separate Receipts and Payment Account & Statement of Income and Expenditure are prepared for each of Plan and Non-Plan transactions.

sd/-
Asst. Accounts Officer

sd/-
Director (A&F)

sd/-
Member
Secretary

ANNUAL REPORT & ANNUAL ACCOUNTS
2004-2005

8. Studies and Surveys:-

All expenses incurred on Studies and Surveys are charged to Income and Expenditure Account (Plan).

9. NCR Planning & Monitoring Cells:-

(i) The expenses on NCR Planning & Monitoring Cell are charged to Income and expenditure under the head "Reimbursement of NCR Cell expenses" on the basis of claims submitted by the Cells for the previous year and any variation in the actual expenses on submission and approval is adjusted in the subsequent year.

(ii) In this year following adjustments were passed through Accounts:-

(a) Expenses payable to GNCT Delhi as on 31.3.03 was Rs, 8,33,523/- but against this actual payments made was Rs. 6,89,112/- and thus Rs. 1,44,411/- was excess paid to the said cell in excess to the provision made as on 31.3.2003 and the same was passed through the accounts.

(b) Expenses payable to UP Cell as on 31.3.04 was Rs, 29,00,000/- but against this actual payments made was Rs.3,17,165/- and thus Rs. 2,75,165/- was short claimed by the said cell as against the provision made as on 31.3.2004 and the same was passed through the accounts.

23 10. Project Development Fund :-

Contribution was made to Project Development Fund from Plan Income of the Board upto 2000-01 and separate Receipt and Payment Account and Income & Expenditure Account was prepared for transactions relating to the Project Development Fund. Since then there is no contribution has been made to this fund and all the expenditure relating to this fund if any has been charged to Income & Expenditure Account (Plan).

11 **Income Tax:** Board's Income was exempted upto 31.3.2002 (Assesment year 2002-03) from Income Tax. But due to the withdrawal of section 10(20A) of the Income Tax Act 1961 wef. Financial Year 2002-03 (Assesment year 2003-04), a provision of Rs. 334684501.67 has been made in this financial year i.e. 2004-05. However, the matter seeking tax exemption has been taken up with Income Tax Department, MOUD and Ministry of Finance.

sd/-
Asst. Accounts Officer

sd/-
Director (A&F)

sd/-
Member
Secretary



- 12 License fee paid to Department of Estates includes Rs. 967/-being special license fee of House No.C-II, 15 Tilak Marg allotted to Mrs. Sarita J Das Ex-MS vide their letter dated 12.12.04.
- 13 A provision of Rs. 229636934/- was made in the F.Y.2002-03, but income tax of Rs. 303507600/- was paid which was due to interest of Rs.69364834/- worked out u/s 234A, 234B and 234C of the Income tax act 1961 and Rs. 4505792/- being additional self assessed tax on the Board's income as per income tax return for F.Y. 2002-03 (Ass. Yr. 2003-04) filed.
11. Figures of last year have been regrouped or rearranged for the sake of proper presentation of the Accounts.

sd/-

Asst. Accounts Officer

sd/-

Director (A&F)

sd/-

**Member
Secretary**



NCRPB







NCRPB







LOANS TO STATE GOVERNMENT/IMP. AGENCIES

Schedule-2

1-Apr-2004 to 31-Mar-2005

Page 1

Particulars	Opening Balance	Transactions		Closing Balance
		Debit	Credit	
HARYANA - DHBVN	23,37,50,000.00 Dr	2,81,21,600.00	3,33,82,500.00	22,84,78,100.00 Dr
STR. OF TRANS. & DIST. IN GURGAON(108.33L)		1,08,33,000.00		1,08,33,000.00 Dr
STR. OF TRANSMISSION IN REWARI		1,72,88,000.00		1,72,88,000.00 Dr
STR. OF TRNS. & DIS. NETWK-GURGAON	12,56,60,000.00 Dr		1,71,42,900.00	10,78,87,100.00 Dr
TRANS. & DIST. NETWORK-GURGAON	11,37,50,000.00 Dr		1,67,50,000.00	8,75,00,000.00 Dr
HARYANA-HVPM LTD.		6,74,35,000.00		6,74,35,000.00 Dr
CREATION OF POWER INFR. IN GURGAN & BHADURGARH		6,74,35,000.00		6,74,35,000.00 Dr
HARYANA - UHBVN	4,67,10,000.00 Dr		58,38,750.00	4,08,71,250.00 Dr
TRAN & DIST. OF POWER IN ROHTAK(112.50L)	1,12,50,000.00 Dr		14,06,250.00	98,43,750.00 Dr
TRANS & DIST. OF POWER IN ROHTAK (354.80L)	3,54,60,000.00 Dr		44,32,500.00	3,10,27,500.00 Dr
HSBC, CHANDIGARH	32,24,20,572.00 Dr		67,48,571.00	31,56,72,001.00 Dr
FIRE SERVICES IMP. IN 16 TN OF HRY(472.40)	4,04,91,429.00 Dr		67,48,571.00	3,37,42,858.00 Dr
M.FIRE SER. IN 15 TOWNS, HARYANA	44,99,143.00 Dr			44,99,143.00 Dr
SHIFTING OF MILK DAIRY IN 16 T	65,34,567.00 Dr			65,34,567.00 Dr
SHIFTING OF MILK DAIRY IN 6 T. (882.23)	5,88,15,333.50 Dr			5,88,15,333.50 Dr
SOLIDWASTE DIS. & IMP. RD. IN HR(1696.60)	16,96,60,000.00 Dr			16,96,60,000.00 Dr
SOLIDWASTE DIS. & IMP. ROAD, HR	4,24,20,000.00 Dr			4,24,20,000.00 Dr
HSIDC, CHANDIGARH	30,93,00,000.00 Dr		20,93,00,000.00	10,00,00,000.00 Dr
DEV. OF GROWTH CENTRE, BAWAL	3,75,00,000.00 Dr		3,75,00,000.00	
DEV. OF GROWTH CENTRE, BAWAL-700	3,50,00,000.00 Dr		3,50,00,000.00	
IMT MANESAR (Rs. 1000L)	3,34,00,000.00 Dr		3,34,00,000.00	
IMT MANESAR (Rs. 2500L)	6,34,00,000.00 Dr		8,34,00,000.00	
IMT MANESAR (Rs. 500L)	2,00,00,000.00 Dr		2,00,00,000.00	
WATER SUPPLY & SEW. AT IMT PH-I, III, IV	10,00,00,000.00 Dr			10,00,00,000.00 Dr
HUDA, CHANDIGARH	2,43,56,56,341.00 Dr	4,40,00,000.00	1,73,87,49,877.00	1,74,06,06,670.00 Dr
AUG. & EXTN. OF WATER SUPPLY/SEW. IN HISSAR	2,25,00,000.00 Dr			2,25,00,000.00 Dr
AUG. & EXT. OF W/S & S/W IN HISSAR		4,40,00,000.00		4,40,00,000.00 Dr
AUGMENTATION OF WATER SUPPLY, FBD	9,75,00,000.00 Dr		1,68,75,000.00	5,06,25,000.00 Dr
CONS. OF 2nd PH. OF WATER WKS, GURGAON	1,15,00,000.00 Dr		27,50,000.00	82,50,000.00 Dr
CONST. OF 200 BADED HOSPITAL-GURGAON	1,50,00,000.00 Dr		37,50,000.00	1,12,50,000.00 Dr
DEV. OF INDL SEC-7, PANIPAT	16,61,530.00 Dr		16,61,530.00	
DEV. OF INS. SEC. 32 & 39, GURGAON	11,15,380.00 Dr		11,15,380.00	
DEV. OF PANIPAT & GURGAON-85-86	43,75,000.00 Dr		37,50,000.00	6,25,000.00 Dr
DEV. OF RES. SEC-2, BHADURGARH	14,01,06,000.00 Dr		7,00,52,500.00	7,00,53,500.00 Dr
DEV. OF RES. SEC-2, BHADURGARH (300L)	3,00,00,000.00 Dr		1,50,00,000.00	1,50,00,000.00 Dr
DEV. OF RES. SEC-38, GURGAON	3,74,40,000.00 Dr		2,13,50,000.00	1,60,90,000.00 Dr
DEV. OF RES. SEC-7 & 8, SONEPAT	35,52,83,000.00 Dr		16,12,27,800.00	19,70,55,200.00 Dr
DEV. OF RES. SEC. 9 & 9A, BHADURGARH	12,77,15,400.00 Dr		9,57,86,800.00	3,19,28,600.00 Dr
DEV. OF RES. SEC. 9&9A, BHADURGARH(515L)	5,15,00,000.00 Dr		2,57,50,000.00	2,57,50,000.00 Dr
DEV. OF RES. SEC. TOR-24, PANIPAT	6,54,41,500.00 Dr		7,23,31,200.00	2,41,10,300.00 Dr
DEV. OF RES. SEC. TOR-38, GURGAON	34,10,43,000.00 Dr		25,52,32,200.00	8,54,11,400.00 Dr
DEV. OF SEC-2.3.4 ROHTAK (250L)	1,56,65,657.00 Dr		1,45,83,333.00	20,53,334.00 Dr
DEV. OF SEC-27 (RESOL)-GURGAON	12,39,99,000.00 Dr		3,07,67,000.00	9,23,02,000.00 Dr
DEV. OF SEC-28 (RESOL)-GURGAON	8,52,33,000.00 Dr		2,13,08,000.00	6,39,25,000.00 Dr
DEV. OF SEC-44,47 (RESOL)FBD	26,34,85,000.00 Dr		11,85,88,000.00	14,49,17,000.00 Dr
Carried Over	4,34,77,38,919.00 Dr	13,95,56,000.00	1,99,40,29,868.00	2,49,32,65,021.00 Dr

29

AAO

S. Srivastava
Director (A&F)

Member Secretary

... continued



NCRPB

Particulars	Opening Balance	Transactions		Closing Balance
		Debit	Credit	
Brought Forward	4,34,77,38,919.00 Dr	13,95,56,000.00	1,99,40,29,998.00	248,32,85,021.00 Dr
DEV. OF SEC-44-47 (RES.) FARIDABAD (400L)	4,00,00,000.00 Dr		2,00,00,000.00	2,00,00,000.00 Dr
DEV. OF SEC-62 (RESDL) FBD.	29,80,55,000.00 Dr		9,95,14,000.00	28,85,41,000.00 Dr
DEV. OF SEC-65 (RESDL)-FARIDABAD	40,23,84,000.00 Dr		10,05,86,000.00	30,17,98,000.00 Dr
DEV. OF SECTOR-84 (RES) FARIDABAD	13,71,84,750.00 Dr		0,14,68,250.00	13,57,16,500.00 Dr
FBD. SEC 44-47 (RES.)-31B, 62L-13%	2,54,69,000.00 Dr		1,42,37,400.00	1,12,31,600.00 Dr
FBD. SEC. 61 (RES.)-344, 12L-13%-14/11	2,58,09,000.00 Dr		1,72,06,000.00	86,03,000.00 Dr
INDL SECTOR-59, FARIDABAD	1,22,70,000.00 Dr		1,22,70,000.00	
IND. SCHEME SECTOR-58, FARIDABAD	5,36,75,000.00 Dr		3,95,75,000.00	
LINK ROAD SCHEME, GURGAON	7,69,235.00 Dr		7,69,235.00	
MASTER SEWAGE SH., TRUNK SW 4, GURGAON	4,50,00,000.00 Dr		1,12,50,000.00	3,37,50,000.00 Dr
MASTER WATER SUPPLY, ZONE III, GURGAON	1,50,00,000.00 Dr		37,50,000.00	1,12,50,000.00 Dr
RES SCHEME SECTOR-18, PANIPAT	7,50,00,000.00 Dr		0,25,00,000.00	1,25,00,000.00 Dr
RES SCHEME SECTOR-2, FARIDABAD	4,68,00,000.00 Dr		4,68,00,000.00	
RES SCHEME SECTOR-2, PALWAL	3,30,77,501.00 Dr		2,80,84,893.00	50,92,608.00 Dr
RES SCHEME SECTOR-39, GURGAON	2,86,28,000.00 Dr		2,86,28,000.00	
RES SC. SEC-18, PANIPAT (235LAC)	1,18,00,000.00 Dr		1,18,00,000.00	
RES SEC-2 & 3 (PART), ROHTAK	72,85,600.00 Dr		72,85,600.00	
RES SECTOR-12, SONLPAI	86,80,000.00 Dr		86,80,000.00	
RES SECTOR 12, SONPAT (175L)	1,31,25,000.00 Dr		87,50,000.00	43,75,000.00 Dr
RES SECTOR 13 & 17, PANIPAT	3,70,40,000.00 Dr		3,70,40,000.00	
RES SECTOR-3(PART-III), REWARI	62,31,600.00 Dr		62,31,600.00	
RES SECTOR-40, GURGAON	2,35,22,800.00 Dr		2,30,22,800.00	
SEC-24, RES SCHEME, PANIPAT	1,89,00,000.00 Dr		1,26,00,000.00	63,00,000.00 Dr
SEC-2, RES. SCHEME, FARIDABAD	2,50,00,000.00 Dr		2,45,58,333.00	50,00,000.00 Dr
SECTOR-2, RES. SCHEME, PALWAL (78II)	1,00,00,000.00 Dr		1,00,00,000.00	
SECTOR-4, RES. SCHEME, REWARI	1,32,00,000.00 Dr		1,10,00,000.00	22,00,000.00 Dr
SECTOR-4 RES SCHEME W, REWARI	1,26,84,750.00 Dr		1,26,84,750.00	
SECTOR-58, INDL SC., FARIDABAD	2,00,00,000.00 Dr		1,75,00,000.00	25,00,000.00 Dr
SOMPAT SEC 7&8 (RES.)-360L-13%	2,70,00,000.00 Dr		1,80,00,000.00	90,00,000.00 Dr
WIDNING OF BADKAL RD, AKHIR-DEL BDR.	2,60,00,000.00 Dr		65,00,000.00	1,95,00,000.00 Dr
WIDNING OF MEHROLI RD, NH-8 TO DEL BDR.	2,25,00,000.00 Dr		56,25,000.00	1,68,75,000.00 Dr
WIDNING OF OLD DEL. ROAD-300L	3,00,00,000.00 Dr		75,00,000.00	2,25,00,000.00 Dr
MCD, DELHI		90,00,00,000.00		90,00,00,000.00 Dr
ASTB OF ABETORE & RENDRING PLANT, GZIPUR		30,00,00,000.00		30,00,00,000.00 Dr
CONSTRUCTION OF CIVIC CENTRE, N DELHI		60,00,00,000.00		60,00,00,000.00 Dr
M.P. GOVT	60,75,00,000.00 Dr	10,00,00,000.00		70,75,00,000.00 Dr
CONS-6 LANE ROAD, GMA GWALIOR	14,40,00,000.00 Dr			14,40,00,000.00 Dr
CONS OF 132KV POWER ST, GWALIOR	9,80,50,000.00 Dr			9,80,50,000.00 Dr
CONS OF 6 LANE ART. ROAD-GWALIOR (18 CR)	16,00,00,000.00 Dr			16,00,00,000.00 Dr
DEV. GWALIOR COUNTER MAGNET I	12,03,75,000.00 Dr			12,03,75,000.00 Dr
DEV OF GMA GWALIOR (SI PH.)-1074L	6,71,25,000.00 Dr			6,71,25,000.00 Dr
WATER SUPPLY SCHEME (PH-I) GMA, GWALIOR		10,00,00,000.00		10,00,00,000.00 Dr
MUNICIPAL CORP. FARIDABAD	16,00,00,000.00 Dr		6,40,00,000.00	9,60,00,000.00 Dr
AUG. OF WATER SUPPLY SYS-FBD	16,00,00,000.00 Dr		6,40,00,000.00	9,60,00,000.00 Dr
Carried Over	5,11,52,38,819.00 Dr	1,13,95,56,000.00	2,05,80,29,998.00	4,19,87,65,021.00 Dr

30

continued

AAO

Director (A & F)

Member Secretary



NCRPB

LOANS TO STATE GOVERNMENT/IMP. AGENCIES Schedule 2 : 1-Apr-2004 to 31-Mar-2005

Page 3

Particulars	Opening Balance	Transactions		Closing Balance
		Debit	Credit	
Brought Forward	5,11,52,38,919.00 Dr	1,13,95,56,000.00	2,05,80,29,898.00	4,19,67,65,021.00 Dr
PATIYALA URBAN DEV. AUTHORITY	41,48,35,000.00 Dr	11,09,51,500.00	1,81,19,286.00	50,75,67,214.00 Dr
EXTN.&AUGMENTATION OF W/S & S/W IN PATIALA		5,68,49,000.00		5,68,49,000.00 Dr
EXTN & AUG OF WATER SUPPLY/SEW. IN PATIALA		5,43,02,500.00		5,43,02,500.00 Dr
EXTN. & AUG.OF WATER SUPPLY, S/W -PATIALA	12,68,35,000.00 Dr		1,81,19,286.00	10,87,15,714.00 Dr
INTEGRATED TOWNSHIP DEV. -PATIALA (2880L)	28,80,00,000.00 Dr			28,80,00,000.00 Dr
PWD,HARIYANA, BLG. & ROAD BR.	22,72,00,000.00 Dr	24,58,50,000.00	3,24,57,143.00	44,05,92,857.00 Dr
UPGRADATION OF ROAD-NCR HRYANA		24,58,50,000.00		24,58,50,000.00 Dr
UPGRADATION OF ROADS, NCR HARIYANA	22,72,00,000.00 Dr		3,24,57,143.00	19,47,42,857.00 Dr
PWD, HARIYANA, PUB. HEALTH DEPT.	29,40,00,000.00 Dr	48,03,00,000.00	1,40,00,000.00	76,03,00,000.00 Dr
AUG. & EXT. OF WATER SUPPLY & SEW. 5 TN. HRY.	9,80,00,000.00 Dr		1,40,00,000.00	8,40,00,000.00 Dr
AUG & EXT. OF WATER SUPPLY & SEW-5 TOWN, HAR	19,60,00,000.00 Dr			19,60,00,000.00 Dr
AUG.&EXT. OF W/S & S/W IN 5 TOWN IN HRIYANA		9,80,00,000.00		9,80,00,000.00 Dr
AUGMENTATION OF DRINDING WATER-PANIPAT		2,81,00,000.00		2,81,00,000.00 Dr
AUGMENTATION OF DRINKING WATER-FARIDABAD		2,20,00,000.00		2,20,00,000.00 Dr
AUGMENTATION OF DRINKING WATER-GURGAON		1,32,00,000.00		1,32,00,000.00 Dr
AUGMENTATION OF DRINKING WATER-JHAJJHAR		3,51,00,000.00		3,51,00,000.00 Dr
AUGMENTATION OF DRINKING WATER -MEWAT		20,00,00,000.00		20,00,00,000.00 Dr
AUGMENTATION OF DRINKING WATER-REWARI		2,07,00,000.00		2,07,00,000.00 Dr
AUGMENTATION OF DRINKING WATER-ROHTAK		2,39,00,000.00		2,39,00,000.00 Dr
AUGMENTATION OF DRINKING WATER-SONIPAT		3,93,00,000.00		3,93,00,000.00 Dr
RAJASTHAN BRIDGE CON.CORPN	2,30,33,336.00 Dr		1,20,75,000.00	1,09,58,336.00 Dr
CONS. OF TUNNEL GHATI (66L)	33,00,000.00 Dr		33,00,000.00	
CONS. OF TUNNEL JINDOLI (131 L)	87,33,334.00 Dr		43,74,998.00	43,58,336.00 Dr
CONS. OF TUNNEL JINDOLI (132L)	88,00,000.00 Dr		22,00,000.00	66,00,000.00 Dr
CONS. OF TUNNEL-JINDOLI GHATI	22,00,002.00 Dr		22,00,002.00	
U.I.T.ALWAR (RAJASTHAN)	7,25,27,667.00 Dr		4,20,52,333.00	3,04,75,334.00 Dr
AMBEDKAR NGR RES. SC. ALWAR-373L	2,48,66,667.00 Dr		1,24,33,333.00	1,24,33,334.00 Dr
AMBEDKER NGR RESDL SH., ALWAR	2,50,00,000.00 Dr		83,33,000.00	1,66,67,000.00 Dr
ARAVLI VIHAR RES. SC. ALWAR	1,25,00,000.00 Dr		1,25,00,000.00	
BHAGAT SINGH SCHEME	2,86,000.00 Dr		2,86,000.00	
CCMM.COMPLEX, KEDIA GANJ,ALWAR	18,75,000.00 Dr		18,75,000.00	
CCNS. OF TRUCK TER. ALWAR (15.5)	2,50,000.00 Dr		1,25,000.00	1,25,000.00 Dr
CONS. OF TRUCK TERMINAL-ALWAR20	1,50,000.00 Dr		1,50,000.00	
HASANKHAN MEWATI NGR(S.PARK)50	2,00,000.00 Dr		2,00,000.00	
RAO TULA RAM NGR RES. SC. BAHROD	37,50,000.00 Dr		37,50,000.00	
RES. SC. BUDH VIHAR(V.NGR)ALWAR	10,00,000.00 Dr		5,00,000.00	5,00,000.00 Dr
RES. SC. CHANDU NGR, BHIWARI(100L	15,00,000.00 Dr		7,50,000.00	7,50,000.00 Dr
RES. SCH. CHANDU NAGAR, BHIWARI	11,50,000.00 Dr		11,50,000.00	
U.P.-BEREILLY DEV. AUTHORITY		30,00,00,000.00		30,00,00,000.00 Dr
RAM GANGA NAGAR HOUSING SCH., BAREILLY		30,00,00,000.00		30,00,00,000.00 Dr
Carried Over	6,14,68,34,922.00 Dr	2,27,66,57,500.00	2,17,67,33,660.00	6,24,67,59,762.00 Dr

31

... continued

[Signature]
AO

S. Sivaaram
Director (A & F)

[Signature]
Member Secretary

ANNUAL REPORT & ANNUAL ACCOUNTS
2004-2005



NCRPB

Particulars	Opening Balance	Transactions		Closing Balance
		Debit	Credit	
Brought Forward	6,14,68,34,922.00 Dr	2,27,86,57,500.00	2,17,67,33,660.00	6,24,57,59,792.00 Dr
UP.-BULANDSHAHAR-KHURJA DEV. AUTHORITY		21,18,00,000.00		21,18,00,000.00 Dr
GANGA NAGAR RESDL. SCH.-BULANDSHAHAR		3,24,00,000.00		3,24,00,000.00 Dr
KALINDI KUNJ RES. SCH.-KHURJA		14,18,00,000.00		14,18,00,000.00 Dr
TRANSPORT NAGAR SCH.-BULANDSHAHAR		3,76,00,000.00		3,75,00,000.00 Dr
U.P.GOVT	74,22,76,321.00 Dr		24,77,44,892.00	49,45,31,429.00 Dr
BAREILLY C.MAGNET DEV.SC-1300L	6,50,00,000.00 Dr		1,62,50,000.00	4,87,50,000.00 Dr
BAREILLY C.MAGNET DEV.SC.-300L	50,00,000.00 Dr		50,00,000.00	
BAREILLY COUNTER MAGNET DEV.SC	2,15,38,462.00 Dr		30,76,923.00	1,84,61,539.00 Dr
DEVELOPMENT OF MEERUT & HAPUR	61,25,000.00 Dr		8,75,000.00	52,50,000.00 Dr
DEV.OF RES.SC.DELTA-I,G/NOIDA	7,07,40,000.00 Dr		2,35,60,000.00	4,71,60,000.00 Dr
DEV OF RES. SC.DELTA-II,G/NOIDA	6,00,00,000.00 Dr		2,00,00,000.00	4,00,00,000.00 Dr
DEV OF RES.SC.DELTAIII,G/NOIDA	2,64,00,000.00 Dr		88,00,000.00	1,76,00,000.00 Dr
DEV OF SWARNNAGRI RES. SC. SEC31	7,20,00,000.00 Dr		2,40,00,000.00	4,80,00,000.00 Dr
HARISHCHANDRA DEV.CENTRE,BLND	16,32,000.00 Dr		8,16,000.00	8,16,000.00 Dr
HATHKARGA NGR,R W.C.MRT-184LAC	14,15,380.00 Dr		14,15,380.00	
HATHKARGA NGR,R W.C.MRT-250LAC	38,45,900.00 Dr		19,23,100.00	19,22,800.00 Dr
IMP. & DEV. OF WATER SUPPLY, MEERUT (96.65L)	98,65,000.00 Dr		24,66,250.00	73,98,750.00 Dr
IMP. & DEV.OF WATER SUPPLY,MRT	1,63,48,200.00 Dr		54,49,400.00	1,08,98,800.00 Dr
IMP.OF DRAINAGE NET,MRT-84.35L	50,61,000.00 Dr		16,87,000.00	33,74,000.00 Dr
IMP.OF DRAINAGE SYSTEM IN GZB(91-III)	50,00,000.00 Dr		10,00,000.00	40,00,000.00 Dr
IMP.OF DRINK.WATER,SIS,HINDON	24,69,000.00 Dr		8,23,000.00	15,46,000.00 Dr
IMP.OF EXIST WATER S.SYSTEM,GZ	29,44,250.00 Dr		9,81,400.00	19,62,800.00 Dr
IMP.OF ROAD NET,GZB(337.5LACS)	2,81,25,000.00 Dr		56,25,000.00	2,25,00,000.00 Dr
IMP.OF ROAD NETWORK IN GZB	71,33,354.00 Dr		17,83,333.00	53,50,001.00 Dr
IMP.OF ROAD NETWORK-MRT-214.12	1,28,47,250.00 Dr		42,82,400.00	85,64,800.00 Dr
IMP. OF STREET LIGHT IN GZD(112.50L)	93,75,000.00 Dr		18,75,000.00	75,00,000.00 Dr
IMP.OF WATER S.SYSTEM,T.HINDON	29,05,400.00 Dr		9,66,800.00	19,37,600.00 Dr
IMPROVE -DRAINAGE NETWORK,MRT	45,00,000.00 Dr		15,00,000.00	30,00,000.00 Dr
IMPROVE OF DRAINAGE SY.GZB	37,50,000.00 Dr		7,50,000.00	30,00,000.00 Dr
IMPROVE OF EX.WATER SUPPLY,GZB	46,87,500.00 Dr		9,37,500.00	37,50,000.00 Dr
IMPROVE. OF ROAD NETWORK, GZB	2,50,00,000.00 Dr		50,00,000.00	2,00,00,000.00 Dr
IMPROVE.OF ROAD NETWORK,MEERUT	2,65,62,565.00 Dr	1,19,62,565.00		1,50,00,000.00 Dr
IMPROVE.OF STREET LIGHT, GZB	35,25,000.00 Dr		8,81,250.00	26,43,750.00 Dr
MKT.OF ASSET CREAT.BY MDA-538L	89,66,670.00 Dr		89,66,670.00	
PALLAVPURAM SC.MEERUT(100 LACS)	7,69,240.00 Dr		7,69,240.00	
PALLAVPURAM SC.MEERUT(50 LACS)	3,84,614.00 Dr		3,84,614.00	
SEWARAGE REHABILITATION SCH.MRT	1,34,02,800.00 Dr		44,67,600.00	89,35,200.00 Dr
SHATABDI NAGAR, SEC-2,4B,5,6,8	7,69,230.00 Dr		3,84,615.00	3,84,615.00 Dr
SHATABDI NAGAR, 4C, MEERUT	52,80,000.00 Dr		17,50,000.00	35,20,000.00 Dr
SHATABDI NAGAR NEW TOWNSHIP SC	93,75,000.00 Dr		93,75,000.00	
SHATABDI NGR 4C, MEERUT (230L)	57,50,000.00 Dr		28,75,000.00	28,75,000.00 Dr
SHATABDI NGR 4C,MEERUT(83.19L)	23,76,856.00 Dr		11,88,429.00	11,88,427.00 Dr
SHATABDI NGR NEW T'SHIP,MEERUT	2,25,00,000.00 Dr	1,12,50,000.00		1,12,50,000.00 Dr
SHATABDI NGR, S-2,4B,5,6,8-270L	62,30,770.00 Dr		20,76,923.00	41,53,847.00 Dr
Carried Over	6,88,91,11,243.00 Dr	2,48,84,57,500.00	2,42,44,78,552.00	6,95,30,90,191.00 Dr

32

... continued

AAC


Director (A&F)


Member Secretary



Particulars	Opening Balance	Transactions		Closing Balance
		Debit	Credit	
Brought Forward	6,88,91,11,243.00 Dr	2,48,84,57,500.00	2,42,44,78,552.00	6,95,30,30,191.00 Dr
SIS HINDON-IMP. OF WATER SUPPLY	71,25,000.00 Dr		14,25,000.00	57,00,000.00 Dr
SUPP. DRAINAGE NET, MRT (187.50L)	1,50,00,000.00 Dr		37,50,000.00	1,12,50,000.00 Dr
TRANS HINDON AREA, DRINK WATER	50,00,000.00 Dr		10,00,000.00	40,00,000.00 Dr
VASUNDHRA NGR RES. SC.-1125 LAC	5,62,50,000.00 Dr		2,81,25,000.00	2,81,25,000.00 Dr
VED VYAS PURI RES. MEERUT (385L)	96,25,000.00 Dr		48,12,500.00	48,12,500.00 Dr
YAMUNAPURAM RES. PH-II, BLD/SHR (97L)	72,75,000.00 Dr		24,25,000.00	48,50,000.00 Dr
YAMUNAPURAM, RES. PH- II, BUL. (350L)	3,50,00,000.00 Dr			3,50,00,000.00 Dr
YAMUNAPURAM R. SC -II, BLND-450L	2,70,00,000.00 Dr		90,00,000.00	1,80,00,000.00 Dr
U.P.-GREATER NOIDA	89,14,49,500.00 Dr		36,28,62,500.00	52,85,87,000.00 Dr
CONS. OF NOIDA EX. WAY-1971.75L	13,14,49,500.00 Dr		3,28,62,500.00	9,85,87,000.00 Dr
CONS. OF NOIDA/GR. NOIDA EX. WAY	20,00,00,000.00 Dr		5,00,00,000.00	15,00,00,000.00 Dr
DEV. OF TOY CITY GR. NOIDA (500L)	3,00,00,000.00 Dr		1,00,00,000.00	2,00,00,000.00 Dr
DEV. OF UDYG VIHAR G/NOIDA-(1500 LACS)	9,00,00,000.00 Dr		3,00,00,000.00	6,00,00,000.00 Dr
INF. DEV. SCHEME-GNCIDA	20,00,00,000.00 Dr			20,00,00,000.00 Dr
INFRA ST. DEV. SC.-G. NOIDA-3000L	24,00,00,000.00 Dr		24,00,00,000.00	
UP-HAPUR PILKHUA DEV. AUTHORITY		10,03,39,000.00		10,03,39,000.00 Dr
PREET VIHAR RES. SCHEME, HAPUR		10,03,39,000.00		10,03,39,000.00 Dr
33 UP-MEERUT DEV. AUTHORITY	8,42,00,000.00 Dr	16,84,00,000.00		25,26,00,000.00 Dr
GANGANAGAR RESDL SH. PH-III, MEERUT	8,42,00,000.00 Dr			8,42,00,000.00 Dr
GANGA NAGAR (RES.) SCHEME PH-III (MEERUT 29/3/05)		8,42,00,000.00		8,42,00,000.00 Dr
GANGA NAGAR (RES) SCH PH-III (MDA, 20/9/04)		8,42,00,000.00		8,42,00,000.00 Dr
U.P. POWER CORPORATION LTD	1,10,40,00,000.00 Dr		10,05,00,000.00	1,00,35,00,000.00 Dr
STR. OF TRANS. & DIST. NETWK-MEERUT DIV.	30,00,00,000.00 Dr			30,00,00,000.00 Dr
TRANSMISSION-DIST. NETWORK, MRT	80,40,00,000.00 Dr		10,05,00,000.00	70,35,00,000.00 Dr
UPSIDC	8,56,00,000.00 Dr		2,86,00,000.00	5,70,00,000.00 Dr
DEV. OF INTEG. IND. T'SHIP, LONI	5,71,00,000.00 Dr		1,43,00,000.00	4,28,00,000.00 Dr
DEV. OF INT. INDL T'SHIP, LONI	2,85,00,000.00 Dr		1,43,00,000.00	1,42,00,000.00 Dr
UPSRTC	7,50,00,000.00 Dr		1,50,00,000.00	6,00,00,000.00 Dr
CONS. OF BUS STATION-SAHIBABAD	7,50,00,000.00 Dr		1,50,00,000.00	6,00,00,000.00 Dr
Grand Total	9,12,93,80,743.00 Dr	2,75,71,96,500.00	2,93,14,41,052.00	8,95,51,16,191.00 Dr


AAO


S. Srinivasan
Director (A & F)


Member Secretary



INTEREST RECEIVABLE


Schedule-15

1-Apr-2004 to 31-Mar-2005

Page 1

Particulars	Closing Balance	
	Debit	Credit
INTEREST ACCRUED ON LOANS		18,32,15,242.00
DHBVN LTD., HARYANA (INTT. ACCD)		23,40,724.00
GOVT OF M.P.(INTT. ACCRUED)		35,52,524.00
GOVT OF U.P. (INTT ACCRUED)		2,06,75,075.00
GREATER NOIDA (INTT ACCRUED)		1,20,280.00
HSCB, CHANDIGARH (INTT ACCRD)		1,78,44,739.00
HSIDC, CHANDIGARH (INTT ACCRD)		19,178.00
HUDA, CHANDIGARH (INTT ACCRD)		6,34,88,758.00
HVPN LTD. (INTT. ACCRUED)		5,56,108.00
MCD DELHI (INTT.ACCRUED)		34,52,054.00
MDA (INTT. ACCRUED)		33,26,476.00
MUNICIPAL CORP. FBD(INTT ACCD)		3,68,219.00
PATIALA CITY PL.&DEV. BOARD(INTT ACCD)		2,17,35,031.00
FWD,B&R BR,HARYANA(INTT ACCD)		93,43,666.00
PWD,PUB.HEALTH DEPT,HR.(INTT ACCD)		2,08,09,332.00
RAJASTHAN BRIDGE CONS.(INTT ACCD)		97,938.00
UHBVN. (INTT ACCD)		33,33,369.00
U.I.T.ALWAR (INTT ACCD)		2,06,703.00
UP-BEREILLY DEV. AUT.(INTT. ACCR.)		20,13,699.00
UP-BKDA(INTT. ACCRUED)		40,21,299.00
UP-HPDA(INTT. ACCRUED)		38,486.00
U.P.POWER CORP.(INTT ACCD)		14,06,712.00
UPSIDC (INTT ACCRD)		44,41,858.00
UPSRTC (INTT ACCD)		23,014.00
PENAL INTEREST ACCRUED ON LOANS		87,07,999.00
GOVT OF MP(PENAL INTEREST)		13,74,010.00
HSCB (PENAL INTEREST)		70,91,235.00
MC FARIDABAD (PENAL INTEREST)		1,72,142.00
RSRDCC (PENAL INTEREST)		70,612.00
GOVT OF M.P., BHOPAL		5,61,37,311.00
HSCB, CHANDIGARH		2,41,78,011.00
HUDA, CHANDIGARH		3,23,360.00
RSRDCC(RSBC) RAJASTHAN		11,93,349.00
UPFRONT FEE-RESETTING OF INTEREST		21,70,078.00
Grand Total		27,59,25,350.00


 AAO


 Director (A&F)


 Member Secretary

MARKET BORROWINGS

Schedule-19

1-Apr-2004 to 31-Mar-2005

Page 1

Particulars	Opening Balance	Transactions		Closing Balance
		Debit	Credit	
TAXABLE BONDS (2006)	2,10,55,00,000.00 Cr	2,10,55,00,000.00		
TAXABLE BONDS-(2008)	3,87,15,00,000.00 Cr			3,87,15,00,000.00 Cr
Grand Total	5,97,70,00,000.00 Cr	2,10,55,00,000.00		3,87,15,00,000.00 Cr

[Signature]

AAO

S. Srivastava

Director (A & F)

[Signature]

Member Secretary





EXPENSES PAYABLE

Schedule-23

1-Apr-2004 to 31-Mar-2005

Particulars	Page 1 Closing Balance	
	Debit	Credit
AUDIT FEES PAYABLE		81,600.00
BALMER LAWRIE & CO. LTD.		32,252.00
BLAZE FLASH COURIERS P.LTD		6,445.00
BONUS PAYABLE		2,467.00
CONSULTANCY FEE (NCR CELL)-PAYABLE		49,816.00
CONVEYANCE PAYABLE		4,704.00
DEARNESS ALLOWANCE PAYABLE		50,419.00
ELECTRICITY EXP. PAYABLE		26,402.00
FEE & HONORARIUM PAYABLE		53,000.00
GEETA RANI-D.A.PAYABLE		228.00
HELLO MINERAL WATER		18,000.00
HOSPITALITY EXP. PAYABLE		1,613.00
INTEREST ON BOND APPLICATION MONEY		2,005.00
INTEREST PAYABLE ON BONDS		24,75,64,598.00
KARVY CONSULTANTS		5,501.00
LEAVE SALARY PAYABLE		97,288.00
LEGAL FEE PAYABLE		4,356.00
LICENCE FEES PAYABLE		72,204.00
MAINTENANCE OF OFF.EQU.PAYABLE		7,175.00
MEDICAL EXP. PAYABLE		75,063.00
NCR MONITORING EXP. PAYABLE		1,42,00,963.00
NEW CAPITAL TAX		12,926.50
NEWSPAPER EXP.PAYABLE		13,451.00
N.S.E. OF INDIA		99,700.00
OTHER EXPENSES PAYABLE		2,833.00
OVERTIME EXP. PAYABLE		10,523.00
PENSION CONTRIBUTION PAYABLE		1,08,185.00
PENSION PAYABLE		9,152.00
P.O.L.EXP.PAYABLE		1,200.00
PROPERTY TAX PAYABLE		74,347.00
SALARY PAYABLE		5,93,573.00
S. GANGOPADHYAY		1,000.00
SYED S.SHAFI		5,360.00
TELEPHONE EXP. PAYABLE		57,510.00
TRAVELLING EXP PAYABLE		34,354.00
TRAVELLING (NCR CELL) PAYABLE		11,820.00
TRUSTEE SHIP FEE PAYABLE		1,61,312.50
TUTION FEES PAYABLE (NP)		9,360.00
XEROX MODICORP LTD		2,373.00
ZEB SECURITY& DETECTIVES PVT. LTD		27,660.00
Grand Total		26,35,93,607.00

36

AAO

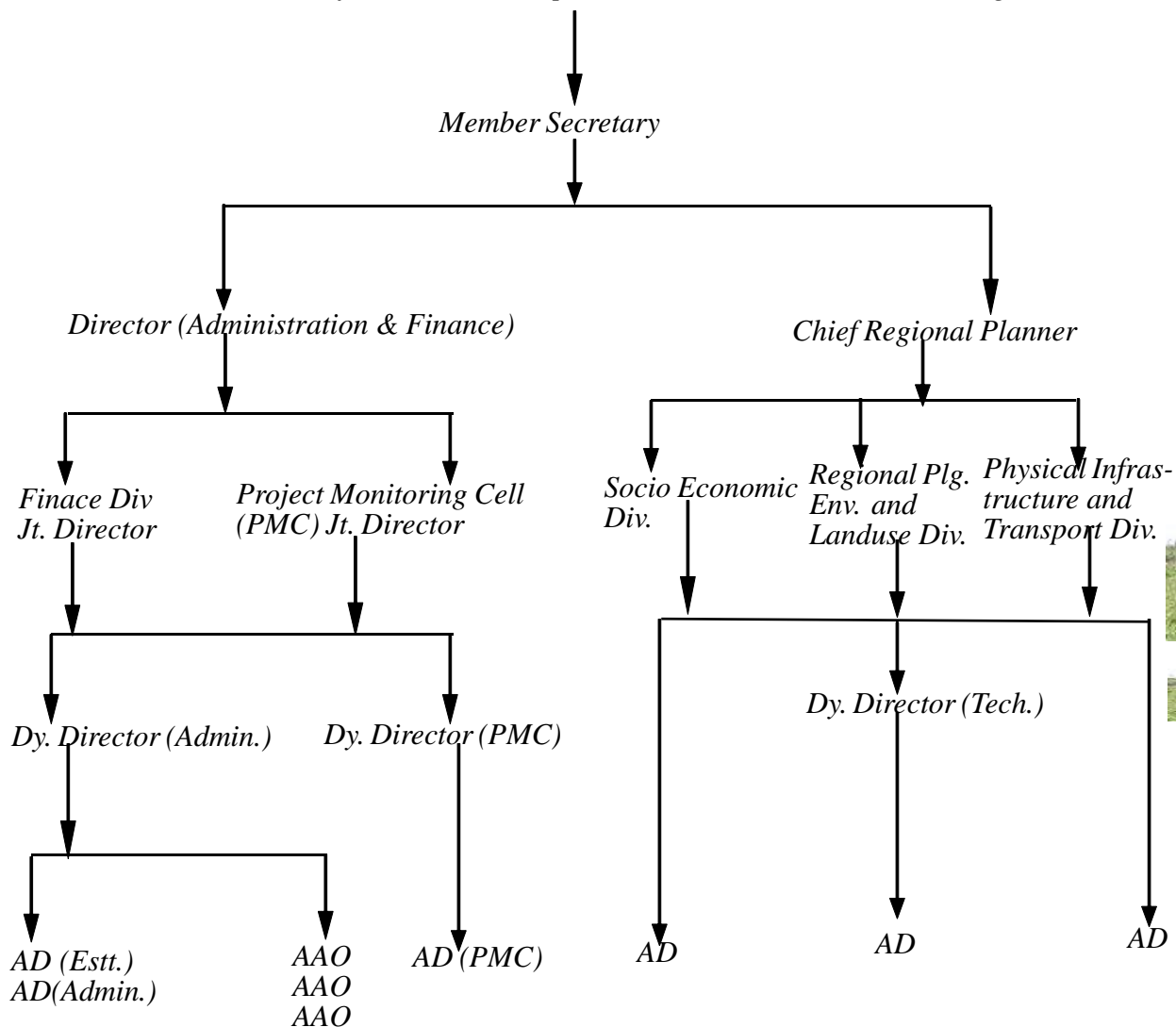
S. Srivastava
Director (A&F)

Member Secretary



Organisational Chart

Hon'ble Minister for Urban Development and Chairman, NCR Planning Board.



National Capital Region Planning Board
 Ministry of Urban Development
 First Floor, Core 4-B,
 India Habitat Centre,
 Lodhi Road,
 New Delhi 110003
 Phone: 24642284, 2464287 Fax: 24642163

ANNUAL REPORT & ANNUAL ACCOUNTS
 2004-2005



ANNUAL REPORT & ANNUAL ACCOUNTS
2004-2005